

## NEXGEN Product Release Notes

### 2022 Q4 GENERAL RELEASE, DECEMBER 2022

#### VERSION: 2022.4.3.0

Includes changes since NexGen version 2022.2.0.0

**SUPPORT NOTICE:** FCC has ended support for SQL Server versions 2008/2008 R2 & 2012. If you use these old versions of SQL Server, **you will no longer be able to receive NexGen updates until you upgrade to SQL Server 2016 or newer.** Microsoft ended support for SQL Server 2012 in July, 2022 ([LINK](#)) and extended support for SQL Server 2008 R2 ended in July, 2019 ([LINK](#)). Please review your SQL version with your IT support and ensure you take steps to move to a supported version of SQL Server. Please contact FCC support if you have any questions.

### NEW FEATURES & ENHANCEMENTS

Fleet Cost & Care is pleased to announce the following features and enhancements introduced in the 2022 Q4 release:

**Quote Profit Forecasting** – With this long-awaited enhancement, you are now able to see estimated profitability on quotes. By defining anticipated costs associated with billing codes, you have visibility into the quote profitability before you conduct a job. In the new PowerBI Quote Profit Forecast dashboard you can see actuals vs. estimated job profits with the variances. You can request this new PowerBI dashboard from your sales representative, CSM, or support.

**Credit Revenue to Employees** – in the new WPF Invoice Screen, you can now assign revenue to employees. You can see full details in the WPF Invoicing User Guide (link in the Training & Documentation section at the bottom of the release notes).

**Samsara DVIR (Driver Vehicle Inspection Report) Interface** – FCC is pleased to announce an interface to Samsara's software to allow for complete processing of DVIR defects into NexGen Work Orders and resolved defects sent back to Samsara.

**ITI (Industrial Training International) Learning Center Interface** – With the ITI interface, you can upload your employees directly to your ITI Learning Center account and you will be able to download completed course certificates and update Employee Certifications automatically. This enhancement was introduced in the Q2 2022 release but has been enhanced and all features are active. This is a no-cost interface for FCC users of ITI training services.

**Pause Display Schedule Refreshes** – One of the features that dispatchers have been requesting is to pause display screen refreshes and to change the refresh times. With this release, each user can define the refresh interval (2-59 minutes or 0 for manual refreshes only). Additionally, users can pause refreshes if needed. A countdown timer is displayed showing how long until the next refresh.

**Upload multiple files** – You can now upload multiple files at one time to the File Links both in NexGen and Atom. This is another frequently requested enhancement that is available to you in this release.

## NEXGEN Product Release Notes

In addition to these major enhancements, you will also find these new features/enhancements in this release:

- **Add confirmation message to user when deleting a record via shortcut key** - Confirmation message implemented in all three screens (Billing Codes, Invoice WPF and Schedule Job WPF). (Case # 19393)
- **Add ability for admin to delete an In-House comment regardless of who created it** - Previously, only users who created an In-House comment in the WPF Schedule Job screen could delete them. This change will allow any user in the Administrator profile to delete any In-House comment. (Case # 19774)
- **Creating Contract PO with Need PO Requisition Checked** - Added option to create a Contract PO Requisition in the PO Requisition screen. To do this, select Contract in the PO TYPE field. (Case # 20980)
- **Adjust Primary/Secondary employee name lines Job E-Ticket Report Labor & Unit Details to better accommodate longer names** - Adjusted formatting of the Job E-Ticket report to allow for longer employee names. (Case # 23246)
- **Add Material Overhead to the Jobs P&L reports** - Added material overhead to the Jobs P&L reports by Invoice Date & Work Date. (Case # 23501)
- **Add data form to Storage tab of Job-WPF** - Added a better user form for managing storage data in the Job WPF screen. See the WPF Dispatch Guide v5.0 for full details on the new Storage Screen changes. (Case # 24027)
- **Specifications replicated on new job during Copy Job routine** - Removed copy Specifications tab information scope from the Copy Job function. (Case # 24708)
- **Search screen for trucking jobs** - Added new search screen for trucking jobs in the Schedule Trucking screen when the WPF Job Screen feature is enabled. This is accessed as a normal search window and will return only trucking jobs matching user provided search criteria. (Case # 24898)
- **KeyPay Payroll CSV Export** - Added KeyPay as an external payroll vendor in Set System Defaults. (Case # 24995)
- **Job WPF LEM Ticket Date Default Issue** - Corrected logic to better capture eligible work dates for resources. When selecting a resource from within the job and clicking on Generate LEM or Generate Job Ticket the system observes the specific records first/earliest eligible date. (Case # 25019)
- **Deleting a Job with a Data Conflict** - Added a message to inform the user where conflicts exist when attempting to delete a job. (Case # 25040)
- **Add ability to pause schedule refreshes on all five Display Schedules** - All display schedules can now be paused to prevent refreshes using a play-pause button in the menu bar. A counter is displayed next to the VIEW button on the display screen. When paused, a display of "Paused m:ss" is shown in red next to the VIEW button counting up

## NEXGEN Product Release Notes

the time the refresh has been paused. Users can set a default refresh rate from 2-59 minutes (see Utilities > User Settings) or 00 for manual refresh only. (Case # 16404)

- **Constrain job lookup to non-trucking related jobs** - In the WPF Job Screen search function, if user was attempting to open a job that was a trucking job, they couldn't and were directed to the Trucking Job screen. Trucking Jobs have been excluded from the WPF Job screen search results. (Case # 25209)
- **Error receipting against a PO** - If an activity was marked as inactive after a PO was generated, the system would not allow the transaction to be completed. This has been corrected and will now allow the transaction to complete, but also show the inactive Activity code in red. (Case # 25264)
- **Prevent user from changing Job Code after e-ticket is issued** - Changed logic when changing Job Code to disallow changes if one or more e-tickets have been generated for the job in the WPF Job Screen. (Case # 25265)
- **Enable Invoice Approval feature for all with a Set System Default flag** - Added System Default flag to enable Invoice Approval feature (See System Administrator section for more details). (Case # 25280)
- **Remove Job Site "Unable to obtain a location" label** - When a Job Site lookup was unable to return a geo-location based on address, it was displaying a message "Unable to obtain a location" message on the Job Site screen. This was causing confusion and is not necessary, so was removed. (Case # 25349)
- **Convert Print Invoices - Plain Paper screen to WPF (for Telerik templates)** - Created new WPF window for Telerik templates. Made legacy plain paper window to load only crystal template and new WPF window will show only Telerik templates. This is only applicable when Modular E-Tickets feature is enabled. (Case # 25422)
- **Add Outlook Interface support for Telerik Invoice screen** - The Outlook email interface has been fully implemented for the WPF Invoice screen. This requires: Modular E-Ticket feature be enabled, the Telerik Invoice Template be installed, and the Outlook interface be enabled by system administrator. (Case # 25455)
- **Add keyboard shortcuts to grid in Invoice WPF** - Added all standard keyboard shortcuts to the WPF Rental Invoice screen. (Case # 25514)
- **Add Insert option to Invoice WPF** - The option to insert a line has been added to the WPF Invoice screen. (Case # 25516)
- **Add Insert option to Job WPF Resources tab** - The option to insert a line has been added to the WPF Job screen Resources tab. (Case # 25517)
- **Add Insert option to Job WPF Estimate tab** - The option to insert a line has been added to the WPF Job screen Estimate tab. (Case # 25518)
- **Allow transaction processing in Job (WPF) while a customer is on HOLD if the job was instantiated before the status change** - Users will not be prevented from completing a

## NEXGEN Product Release Notes

transaction related to a customer that is on hold if the transaction began before the hold status was applied. (Case # 25542)

- **Create a Utility to Close Purchase Orders as a General Enhancement** - A new utility has been created to allow users to close purchase orders that remain open and need to be closed for various reasons. (Utilities > Close Purchase Order). (Case # 25566)
- **Jobs that are scheduled only on weekends and not marked for Work Weekends do not show on Daily views of Display Schedules** - This resulted from issues tied to the "Work Weekends" flag on the job. The Work Weekends Flag, along with Date Flexible & Time Flexible flags were moved from the Parameters tab to the Main tab just below the calendar. If the Work Weekends flag is "No" in system defaults, not checked on the job and a job is scheduled for a weekend day, the user will be prompted with the following message: "You have selected a date that falls on a weekend. Do you want to check the Work Weekends checkbox?" Valid responses are Yes, No and Cancel. (Case # 25570)
- **Add Display Schedule Refresh Interval to User Settings WPF screen** - To allow users to set their Display Schedule refresh time, the Utilities > User Settings screen was changed to Set Schedule Refresh Interval. Valid values are 02-59 (minutes) and 00 (manual refresh). (Case # 25584)
- **Change language used for Special Equipment Required in Specifications tab** - Changed the column label on the Specifications tab on the Unit in the WPF Job Screen from Special Equipment Required to Equipment Required. (Case # 25588)
- **Add Credit To Employee feature in Invoice WPF** – Added functionality to allow users to now assign revenue to employees in the new WPF Invoice Screen. See full details in the WPF Invoicing User Guide. (Case # 25712)
- **Schedule Job - WPF - Employee Job Certification validation** - Hover text to display the specific certificate that is missing when the validation error occurs related to a job site. (Case # 25724)
- **Replace references to 'Keep Truckin' with 'Motive'** - Telematics company changed names, adjusted all references to read "Motive" (new company name). (Case # 25728)
- **Add support for uploading multiple files at one time in File Links** - Added File Link functionality to allow users to upload multiple files at one time. The prompt to Upload File was changed to read, "Upload File(s)". When user clicks on 'Upload File(s)', they will be taken to the system file manager. The user can then select multiple files to upload. After the upload is complete, they will see an info message that reads, "Your upload was successful." If there is a disruption in connectivity or other cause of failure, they will see an info message that reads, "Unable to complete upload, please try again." The default list of file type extensions to select for upload are: .pdf, .xls, .xlsx, .msg, .eml, .ppt, .pptx, .doc, .docx, .jpg, .jpeg, .png, .gif, .tiff, .dwg, .dxf, .dgn, and .stl (Case # 25766)
- **Sales Assistant Report - Add a filter by Task #** - Added a Task # filter to the Sales Assistant Report. (Case # 25809)

## NEXGEN Product Release Notes

- **ELD Interface is not constraining ELD Employees import to only active Samsara users** - Limited ELD import to just import active Samsara users. (Case # 25843)
- **Cancelled Units & Employees Still Showing to be selectable on WPF LEM unit/employee selection & job ticket report** - Corrected issue that was allowing cancelled units/people to be displayed in the LEM generation screen. (Case # 25964)
- **Changes to MSHA report** - Added Job Site name to the MSHA Report (printed, displayed, and exported). (Case # 26004)
- **Add a flag to control Employee Export to ITI** - For the ITI Integration, added a flag to the employee to control individual employee's status of whether to export to ITI or not. (Case # 26078)
- **Missing columns in Open POs by Job report export** - Added missing columns to Excel export for the Open POs by Job report. (Case # 26183)
- **Add Taxable flag to data form in Rental Invoice** - Added a "Taxable" flag to Rental Invoice data form to allow each billing line to be individually flagged as taxable or non-taxable. (Case # 26206)
- **Add PO field to Invoice Register Report - Export to CSV/Excel Versions** - Added the PO field in the Invoice Register report and the report's Excel export. (Case # 26324)
- **Schedule Job WPF - Ticket Cancel** - To use this feature, add a save location - File Links using API - When using Atom API for managing storage of file links, ensure permissions only rely on the API service account permissions rather than individual user permissions to the server directories. (Case # 26348)
- **Inventory Stock Adjustments Filter Criteria** - Added filter of Quantities with multi-select options of All, Positive, Zero and Negative. (Case # 26375)
- **Adjust point size of font in SMTP emails** - Default font/size is Calibri 11pt for SMTP email messages. (Case # 26494)
- **Add badging to Job Certificates on WPF Job Screen** - Added a counter badge to Job Certificates on the WPF Job Screen "Job-Related Certificates" and only count attachments in File Links, not E-tickets. (Case # 26511)
- **Add Industry Code to Quotes** - This enhancement adds the Industry Code to both Job and Trucking Quotes. (Case # 26638)
- **Reports --> Quotes --> Quotes By - Add Quote missing date fields to the export file** - Added the following missing quote related date fields to the export file: Created Date, Award Date, Job Date, Last Modified Date. (Case # 26711)
- **Telerik Rental Invoice - Save As PDF function** - In some circumstances E-Tickets and/or T&C's were not included on an exported PDF Telerik formatted invoice. This has been corrected. (Case # 26759)
- **E-Tickets (Not Approved or) Invoiced Employee Order** - Updated display logic to list employees per Job Employee table order. (Case # 26797)



## NEXGEN Product Release Notes

- **Phone # formatting issue with Job WPF** - Ordered-by Details section - Corrected phone number formatting issue. Fixed in Customer Details section and Report To Details section. (Case # 26988)
- **Add Certified Payroll to the Job Quote screen** – Added Certified Payroll flag to quote screen. In Set System Defaults, an administrator may choose to set the value to NULL, No, or Yes. If the value is No or Yes, the user will not need to set the value before saving. By setting the option to NULL, the system will require the user to select a value with each quote – default value is “No”. (Case # 26992)
- **Rename Telerik - Invoice - Rental to "Invoice - Rental - Telerik"** - Changed dropdown names for Telerik Forms. Adjusted dropdown names to better group related templates. (Case # 26999)
- **Add Additional Column for any Double Time Hours to Payworks Export File** - Added additional column for Double Time hours to Payworks Export File. (Case # 27029)
- **Add validation and message to WO level Activity when System Defaults requires Activities** - Added a validation to enter at least one activity on the WO Activities tab when "Require Activity on WO/Unit" is checked in Set System Defaults (SSD). (Case # 27162)
- **Decouple modular e-tickets from Job WPF** - Removed the dependency of Job WPF on modular e-tickets and made it an independent feature. Modular E-Ticket module can now be used with the legacy job screen. Note: some features of the Modular E-Ticket are not available in the legacy job screen (e.g. unit-level specifications, hook ready) (Case # 27288)
- **Decouple Billing Codes WPF from Invoice WPF and add option to Features tab of System Defaults** - Billing Codes WPF modified to be an independent feature and not dependent on Invoice WPF. NOTE: Billing Codes WPF feature is REQUIRED for the Quote Profit Forecasting feature. (Case # 27289)

### SOFTWARE ISSUES ADDRESSED IN THIS RELEASE

- **Work Orders - Retail price not changing for new/used part** - Corrected work order parts processing to update the retail price when changing between new & used parts. (Case # 14300)
- **User Maintenance and Deadlocks** - Corrected a database deadlock condition that could occur when modifying user records. (Case # 17366)
- **Approved and processed labor does not show up as processed** - Added the XACT\_ABORT statement to the SP\_FMS\_SP\_PAYROLL\_PROCESSOR to roll back the transactions in case of any error. (Case # 22171)
- **NexGen/Sage Interface: Employees Sync - Payroll SSN Formatting Issue** - An issue with SSN formatting in Sage 300 was reported. The issue was caused by Country field in Sage not being populated with "USA". This has been adjusted to send that field if it is not already set in Sage. (Case # 22619)

## NEXGEN Product Release Notes

- **Part number replaces freight line item in work order** - In a specific sequence of steps from the Work Order parts tab, opening the Parts Screen then going back to the Work Order Screen without exiting the Parts Screen and selecting a different part could cause the part number on the newly selected part to be overwritten. This has been corrected. (Case # 23271)
- **Error Adding Customer Owned Unit** - Corrected an error when adding a new customer owned unit after attempting to search and unable to locate item. (Case # 23317)
- **Checklist History Detail Report - Yard Issues** - Corrected issue on Checklist History report where report was restricting output only to user's default yard. (Case # 23398)
- **Employee Work Order Schedule: Not Displaying Activities Correctly** - Corrected Employee Work Order Display Schedule to properly show all WO activities. (Case # 23617)
- **Timeout Error on Unit/Employee Schedule showing the SQL statement** - In a specific condition the Unit/Employee schedule would throw an error related to a SQL statement. This specific exception has been corrected. (Case # 23778)
- **Invoice Export error in Dynamics GP Interface** - An error was occurring with specific user input characters that was preventing invoices from exporting to Dynamics GP accounting. The input characters have been properly masked allowing for successful export. (Case # 23931)
- **Jobsite creation error: Contacts with a single quote is failing with an exception** - Escaped single quote entry for job site to prevent exception. (Case # 24233)
- **E-Ticket Manager does not retain layout definition on exit** - In Job WPF screen resource tab, save layout to E-Ticket Manager screen on exit. (Case # 24301)
- **Sales profile In-House comments not working** - Issue with menu security Delete flag for user profile was preventing users from accessing in-house comments and other functionality in the Jobs WPF screen. This has been corrected and the Delete flag setting can be set without affecting data entry functions. (Case # 24375)
- **Comments Column overlap other columns** - Corrected a display issue in the WPF Job Screen when Comment column was displayed - it was overlapping other columns. (Case # 24424)
- **Electronic Job Ticket - Hours and Miles printing multiple days on 1 ticket** - Corrected issue where in some conditions, multiple days were printing on an e-ticket. (Case # 24614)
- **NexGen Error - Cannot access disposed object (Icon)** - Corrected an issue that occurred when the Invoice WPF screen is in maximized state and the data form is in floating. When user would click print to open the Invoice report and then close the report, this error was occurring. (Case # 24632)

## NEXGEN Product Release Notes

- **E-Tickets and Invoice History tabs are not honoring 'Save layout on exit'** - Corrected Save Layout functionality on E-Tickets and Invoice History tabs on WPF Rental Invoices screen - not just the Details window. (Case # 24734)
- **Billing code that is a percent with a negative value is not calculating correctly in recurring invoice** - Corrected calculation so percentage with negative value calculates correctly. (Case # 24779)
- **Memory Full error generating Quote PDF** - Corrected memory management error that was occurring after generating 30+ Quote PDFs. (Case # 24884 & 26245)
- **Cannot email Revenue Detail Report** - Corrected issue that caused user not to be able to email report. (Case # 25211)
- **Error on Emailing report Work Order Summary Report** - Corrected an issue related to the Work Order Summary Report where the SQL query was using an incompatible variable type. This caused problems when unviewable characters were in a text field. (Case # 25249)
- **E-Tickets Not Invoiced - Error when clicking View Ticket** - In a specific sequence of steps on the E-Tickets Not Invoiced, clicking on the View Ticket button would display an error "Object Reference not set to an instance of an object". This issue has been corrected. (Case # 25354)
- **Billable Work Order History Report – Incorrect Amount Billed Calculation** - Corrected an issue where the Amount Billed column was not calculating correctly under certain conditions. (Case # 25513)
- **WPF Job screen is not honoring Menu Security Delete Master** - Corrected security functionality to ensure when Delete Master is checked (prevent users from deleting master records) the Delete option is not present for that user on the Job overflow menu. (Case # 25528)
- **Adjust E-Tickets Not Completed report to support Enhanced E-Ticket Cancellation statuses** - Corrected E-Tickets Not Completed Report to display/print all e-ticket statuses included in Enhanced E-Ticket Cancellation functionality. (Case # 25531)
- **NexGen Error "The given key was not present in the dictionary."** - This error was caused by a specific set of circumstances when rearranging columns on a tab of the WPF Job Screen, saving the job then saving layout. This specific error has been corrected. (Case # 25619)
- **Changing Dates Using the Drop Down** - Adjusted the time part of the date time fields to remain as originally defined when the date is set using the Today button. (Case # 25623)
- **Work Weekends system flag is not being honored when converting a quote to a job** - Corrected an issue that occurred when "Work Weekends = Yes" in system defaults, when converting a quote to a job was not retaining the value and unchecking the Work Weekends checkbox on the job. This has been corrected. (Case # 25748)



## NEXGEN Product Release Notes

- **Schedule --> Unit Down Time/Employee Vacation Not Setting Correct Default Dates** - Set the default dates correctly when selecting dates from the calendar for Unit Down Time/Employee Vacation fields. (Case # 25769)
- **CTRL + C/V is not working correctly when individual fields have focus in Job WPF** - Copy/Paste functionality was working differently on a field and on a record (e.g., Unit). Corrected so that if on an individual field, copy/paste only affects that field and if selecting an entire line, will copy/paste that full line. (Case # 25772)
- **Operator/Oiler reversed on schedule display** - Corrected stored procedure used to collect data for schedule display to return operator/oiler in correct order. (Case # 25777)
- **User Experiencing Regular Crashes in Unit/Employee Schedule** - Corrected issue that occurred when issuing a LEM from the Unit/Employee Schedule, then dragging the bar and immediately closing screen. (Case # 25823)
- **QuickBooks Online - Exporting Vouchers Errors** - Corrected an incorrect column name in the voucher export to QB Online to provide the required parameter needed to supply a required value. This was only impacting certain customers with specific settings in QB Online. (Case # 25828)
- **Getting an error opening the Job WPF screen** - In specific conditions, user's screen layout settings became corrupt. Added error handling to display default layout and notify user with message: "Something went wrong while trying to load your saved layout; the default layout will be used." (Case # 25945)
- **"Object reference not set to an instance of an object" error** - Corrected an issue that occurred when opening job from within invoice screen, closing Job screen then attempted to close NexGen without closing invoice screen. (Case # 25994)
- **E-tickets Not Approved or Invoiced "Tab key" inconsistent movement of the cursor** - Corrected tab field sequence. (Case # 26010)
- **Job confirmation not prompting for save before generating PDF** - Added prompt to save job prior to generating any PDF forms from within the WPF Job screen. (Case # 26022)
- **Error when printing invoices "Cannot access a disposed object - Icon"** - Corrected an issue that occurred when the Invoice WPF screen is maximized and the data form is floating, print an Invoice report and then later close the report, this error was occurring. (Case # 26026)
- **Invoicing WPF is on by default** - Corrected an issue where NexGen update was setting Invoicing WPF feature to ON by default. Any updates will leave Invoicing WPF feature setting as it was prior to update. If not previously set, will set to OFF. (Case # 26095)
- **Unit Meter Displaying Incorrect E-Ticket Number** - Corrected an issue that occurred when multiple e-tickets for a job on a specific workday was recording the wrong e-ticket number on the Unit's meter tab. (Case # 26100)

## NEXGEN Product Release Notes

- **Can't Send Job LEM to resources on last day of a scheduled duration (WPF)** - Corrected LEM generation issue. (Case # 26162)
- **Job WPF - Error saying crane needs to be picked up from job when it doesn't** - In certain conditions, the "Picked up" notification was showing on the Unit Display schedule erroneously. This has been corrected. (Case # 26305)
- **Unit Schedule Screen - Refresh losing the cursor position** - In some screens, when the Unit Schedule was refreshing, it would cause the window actively being worked in to lose "focus" and interrupt work. Corrected this issue so proper field focus is maintained during refresh. (Case # 26341)
- **Yard level footer is not populating the Rental Invoice** - Corrected logic when populating footer on Rental Invoice. Yard footers will take precedence over Company and System footers. (Case # 26390)
- **Employee was issued a ticket outside of eligible days and the record cannot be corrected** - Adjusted date logic to prevent a user from selecting a date outside of the valid range. (Case # 26462)
- **Add a keyboard shortcut for printing an invoice in the Rental Invoice screen** - Added a keyboard shortcut "CTRL + P" for printing an invoice. (Case # 26476)
- **Job WPF bug when issuing LEM to many resources** - When a LEM is issued to many employees, the Select All check box was only selecting the employees displayed and not all employees scheduled on the job. This has been corrected to now select all employees on job without having to scroll. (Case # 26508)
- **Able to add unit code to summary line billing code in Estimate tab of Job screen** - Changed logic related to unit codes on summary billing codes with sub-items. If a billing line item is a summary line, user is not able to add a unit code. If a billing line item has a unit code and user attempts to drag or add a line as a sub item, a prompt will appear that reads, "This line item already has a unit code assigned. To add sub-items to this line, remove the Unit Code." (Case # 26519)
- **Issue in Stock Adjustments** - Adjusted logic in Stock Adjustments so that user is NOT able to click into the CURRENT STOCK column and modify the value. Only the NEW STOCK column can be modified. (Case # 26660)
- **Primary flag in Resources tab is not including in the save validation logic** - If Primary flag for employee on Resource tab is changed, validate that Save has been performed. If not saved, prompt user to save before exiting job. (Case # 26775)
- **Job WPF Estimated vs. Job Revenue Forecast Detail Report - Estimated #'s doesn't match** - Identified the process causing the orphaned Sub Account records and implemented a fix to prevent future occurrences. (Case # 26837)
- **WPF Rental Invoice Exception from E-Tickets Not Invoiced** - Corrected timing issue while loading invoices in the WPF Rental Invoice screen. (Case # 26854)

## NEXGEN Product Release Notes

- **Additional Columns appearing in Labor for Payroll Pre-Processor screen after employee saves layout** - Corrected an issue related to Save Layout when user sets zoom other than 100%. (Case # 27054)
- **Employee Vacation/Leave - Incorrect error message "Overlapping Days/Time"** - Employee Vacation/Leave module updated to check dates and times. (Case # 27079)
- **Error message when loading POs "InvalidArgument=Value of '0' is not valid for SelectedIndex"** - Corrected invalid PO exception when closing the PO screen. (Case # 27090)
- **Job WPF - PO screen not populating in jobs** - Specific to PO Screen, RDP Settings vs Published Apps issue corrected by adjusting the default display height for published apps. (Case # 26392)
- **Job file links coming from Job Site - Include on Invoice doesn't allow nulls** - Corrected an issue when saving file links with 'Available on Tickets' checked on the customer job sites. (Case # 27089)
- **Invoices not emailed via Print Batch** - Corrected the issue in "Print Batch" and "Print Not Printed" screens where the email addresses entered in the customer screen which are separated by a semicolon are not being sent to the recipients. (Case # 27149)
- **DocuSign Error -Post Doc not working consistently** - Ordered by Name has been corrected to use the Name from the job site contacts. (Case # 27159)
- **Import Tenna Telematics is not retrieving any records** - Revised Tenna import process to convert XML data to JSON. (Case # 27179)
- **Job WPF - Storage Item Description Error Message** - Item Description field length fixed to 100 characters as in legacy screen. (Case # 27299)
- **Invoice Amount and Detail doesn't balance - Error when printing** - Corrected an issue on WPF Invoicing screen where the tax amount is changing to zero when changing any data on the main tab and saving a taxable invoice. (Case # 27301)
- **Error with tax amounts when exporting invoices to QB** - Corrected an issue where the tax amount is changing to zero when changing any data on the main tab and saving a taxable invoice. (Issue: Quickbooks needs to have unique Customer Name, Vendor Name, Employee. Having the Customer, Vendor, and Employee name the same results in a duplicate record error.) (Case # 27385)
- **E Ticket Modular - Telerik folder path issue with Sage CRE** - Corrected an issue related to the working directory of the application when using Sage CRE / Timberline. (Case # 27405)
- **Yards not populating in WPF Invoice quick search** - Adjusted the invoice lookup's quick view to display the yards in the yard dropdown to filter the Invoices by Yard. (Case # 27455)
- **Error Viewing E-Ticket - Telerik path issue with QB Online** - Corrected an issue related to the working directory of the application when using QB Online. (Case # 27482)

## NEXGEN Product Release Notes

- **Rental Invoice billing line dates are updating to current date** - Corrected an issue of billing line dates changing to current date after saving a Rental Invoice. (Case # 27606)
- **Invalid TEN99TYPE Exporting to Dynamics GP** - Corrected an issue with the Great Plains accounting interface where the first record TEN99TYPE applies to all the other vendors synced when NexGen exports 2 or more vendors via Synchronize Vendors. (Case # 27618)

### **SYSTEM ADMINISTRATOR NOTES**

**SUPPORT NOTICE:** FCC has ended support for SQL Server versions 2008/2008 R2 & 2012. If you use these old versions of SQL Server, **you will no longer be able to receive NexGen updates until you upgrade to SQL Server 2016 or newer.** Microsoft ended support for SQL Server 2012 in July, 2022 ([LINK](#)) and extended support for SQL Server 2008 R2 ended in July, 2019 ([LINK](#)). Please review your SQL version with your IT support and ensure you take steps to move to a supported version of SQL Server. Please contact FCC support if you have any questions.

**SUPPORT NOTICE:** FCC will end support for the MAPI e-mail protocol in 2023. This is an old email protocol that is used by very few of FCC's clients. Once support is ended, only SMTP email protocol will be supported within NexGen. To check your email configuration, go to Admin > Email Settings. The very first box will be "Send E-Mail using" and the options are: No Mail, MAPI and SMTP. If your system is configured to use MAPI, please contact your IT provider or FCC support for assistance in determining how to move to SMTP.

#### **System Default Changes**

- **Main Tab Changes**
  - Added KeyPay as an external payroll company.)
- **Invoice Tab Changes**
  - Added Enable Invoice Approval flag (default=unchecked)
- **Quote Tab Changes**
  - Added Certified Payroll (default=No); to make this field required in the Quote, set the value to NULL
  - Added Require Industry Code (default=No)
- **E-Documents Tab Changes**
  - Added Enable push notifications for Atom (default=unchecked)
- **Features Tab Changes**
  - **New field – Quote Profit Forecast.** This will enable the new Quote Profit Forecast features (see Quote Profit Forecast User Guide link below in Documentation & Training section). NOTE: Enabling this feature will automatically enable the WPF

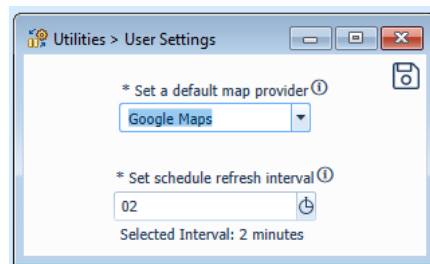
## NEXGEN Product Release Notes

Billing Code feature which is required for using the Quote Profit Forecast features. Default=unchecked

- **New field – Billing Codes WPF.** This will enable the WPF version of the Billing Code maintenance screen. NOTE: This feature will automatically be enabled the if the Quote Profit Forecast feature is enabled. Default=unchecked

**Modular E-Tickets** – See the Modular E-Ticket User Guide for setup and configuration of new modular e-ticket enhancements as well as new features including editable times. **Note: before the modular e-ticket format can be incorporated into invoices for printing, a new Telerik Invoice template will have to be created by FCC. Please contact your CSM (Customer Success Manager) or FCC support to request a new template.**

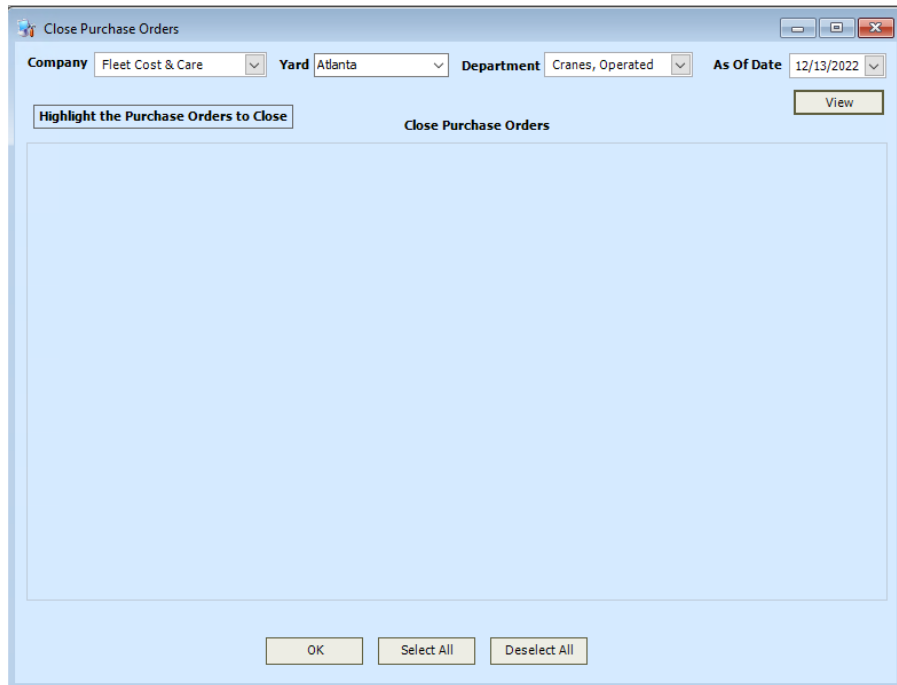
**User Settings (Utilities > User Settings)** - Added option to control display schedule refresh intervals. Valid options are 02-59 (minutes between screen refreshes) and 00 – manual refresh only.



**Close Purchase Orders (Utilities > Close Purchase Orders)** – A new utility has been added to allow closing of purchase orders. The utility will provide company/yard/department/as-of-date filters. Once the list of POs is generated, select those POs to close and click on OK. There are also options to Select All & Deselect All.



## NEXGEN Product Release Notes



**Menu Security Setting Changes (Admin > Menu Security)** - Added the following items that are **enabled by default**. Check your Menu Security settings for all profiles to ensure the access to these latest items are enabled/disabled as appropriate for your organization.

- **Reports > Quotes > Quote Profit Forecast** This will allow/deny access to the new Quote Profit Forecast report. This will be ENABLED by default for all profiles. This report will only be visible on the menu once the Quote Profit Forecast feature has been enabled.
- **Utilities > Close Purchase Orders** - This will allow/deny access to the new Close Purchase Order utility. This will be ENABLED by default for all profiles.

**Profile Screen Setting Changes (Admin > Profile Screen Settings)** - Added the following items that are **enabled by default**. Check your Profile Screen Settings for all profiles to ensure the access to these added items are enabled/disabled as appropriate for your organization.

- **Enter > Quotes > Job Quotes > Profit Forecast**

## NEXGEN Product Release Notes

### **DOCUMENTATION & TRAINING**

- **WPF Admin, Schedule Job Screen and Dispatch User Guide:**
  - [Quote Profit Forecast User Guide V 1.0](#) (New for this release)
  - [NexGen\\_WPF\\_Dispatch\\_User\\_Guide\\_5.0](#) (Updated for this release)
  - [Modular\\_E-Ticket\\_User\\_Guide\\_3.0](#) (Updated for this release)
  - [ITI Integration User Guide V 1.0](#) (New for this release)
  - [NexGen\\_WPF\\_Invoicing\\_Guide\\_v3.0](#) (Updated for this release)
  - [NexGen\\_WPF\\_Admin\\_User\\_Guide\\_2.0](#)

### **PREVIOUS RELEASE DOCUMENTS:**

Quarterly Release [2022.2.0.0](#) (Q2 2022)

Quarterly Release [2021.4.0.0](#) (Q4 2021)

Quarterly Release [2021.2.3.1](#) (Q2 2021)